

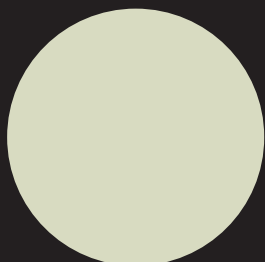
granol[®] **pittura**

1923

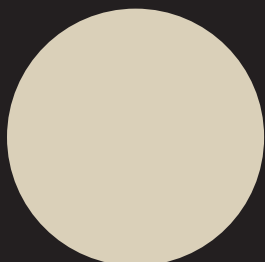


Die Farben

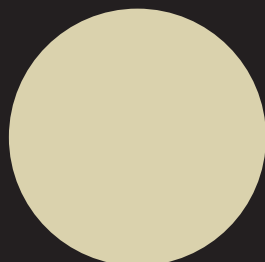
Die exklusive **granol®** **pittura #1923-Kollektion** enthält
68 ausgewählte epochale Farbtöne.



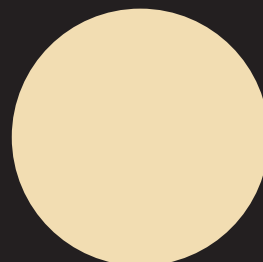
01 #1923



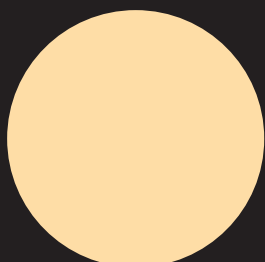
02 #1923



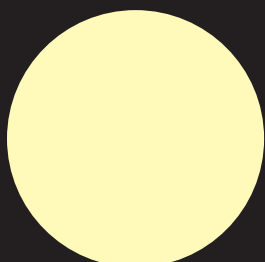
03 #1923



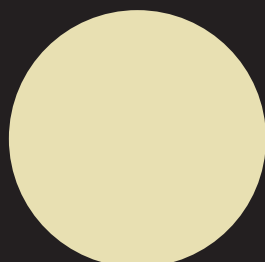
04 #1923



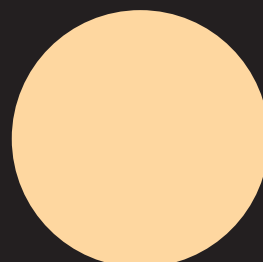
05 #1923



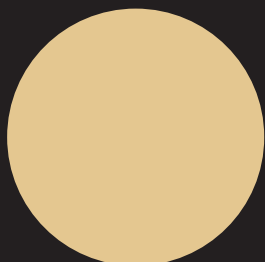
06 #1923



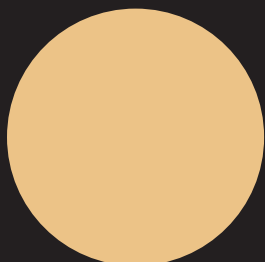
07 #1923



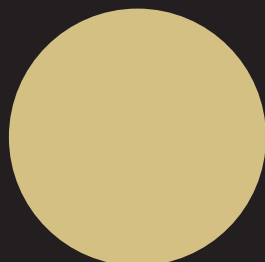
08 #1923



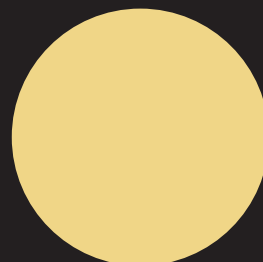
09 #1923



10 #1923



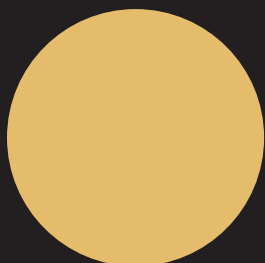
11 #1923



12 #1923



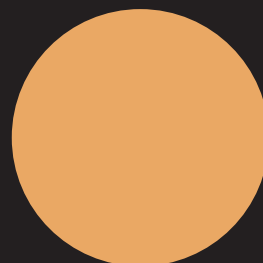
13 #1923



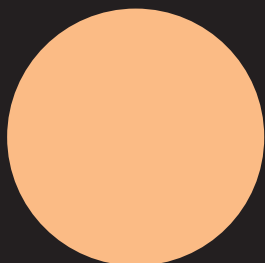
14 #1923



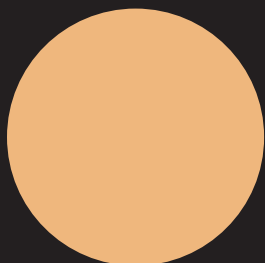
15 #1923



16 #1923



17 #1923



18 #1923



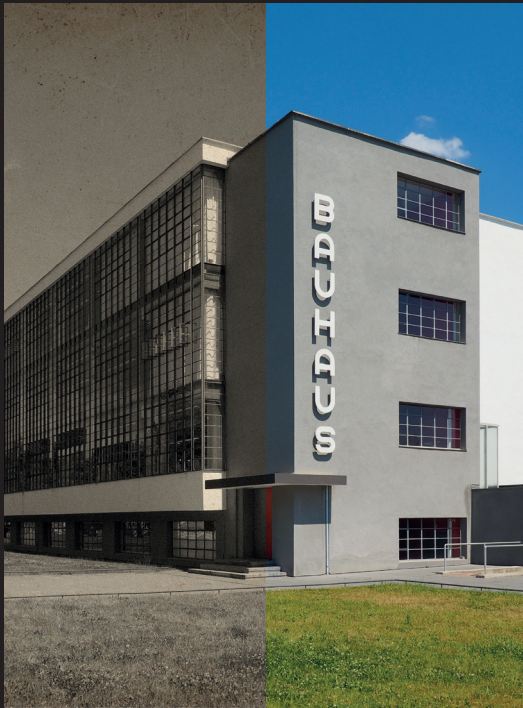
19 #1923



20 #1923

Die 1923-Kollektion

Mit Material und Kreativität die Moderne gestalten



1923 ————— Heute

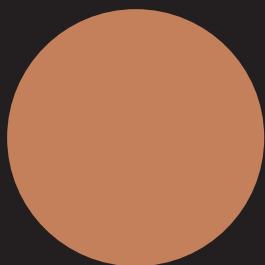
Das Bauhaus wurde 1919 durch Walter Gropius in Weimar gegründet. Die Hochschule für Architektur und angewandte Kunst setzte den Anspruch, die moderne Gesellschaft mitzugestalten und gilt als Geburtsstätte der Klassischen Moderne.

Geprägt durch die geometrische und funktionale Formsprache findet der Bauhaus-Stil bis heute eine breite Anwendung in Kunsthandwerk, Architektur und Design.

Die **granol® pittura #1923-Farbenkollektion** ist eine Hommage an die erste öffentliche Bauhaus-Ausstellung, die 1923 in Weimar stattfand.

Durch die starke Resonanz in der Öffentlichkeit resultierte ein publizistischer Erfolg, welcher die Granol AG laufend in ihrem Schaffen inspiriert.

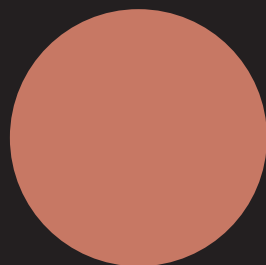




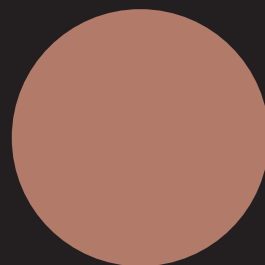
21 #1923



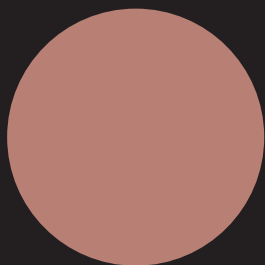
22 #1923



23 #1923



24 #1923



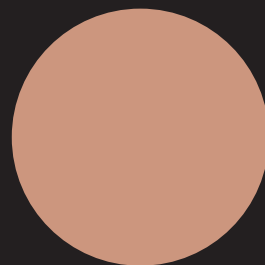
25 #1923



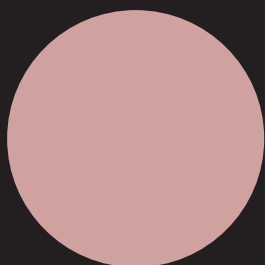
26 #1923



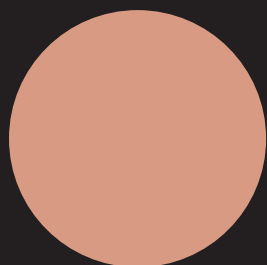
27 #1923



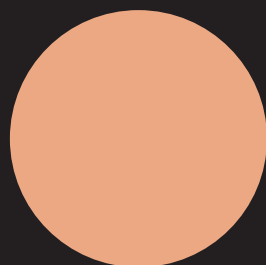
28 #1923



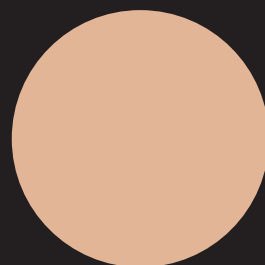
29 #1923



30 #1923



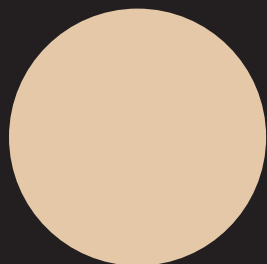
31 #1923



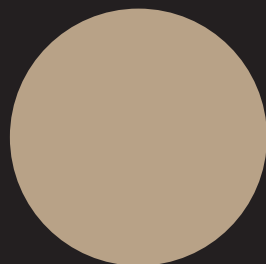
32 #1923



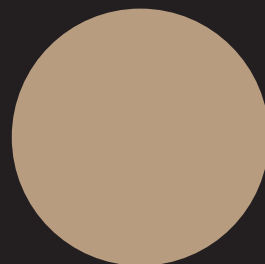
33 #1923



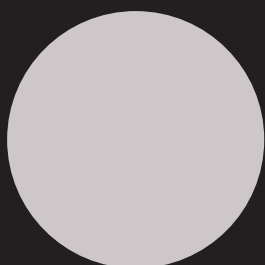
34 #1923



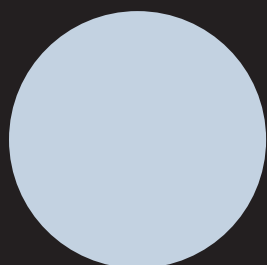
35 #1923



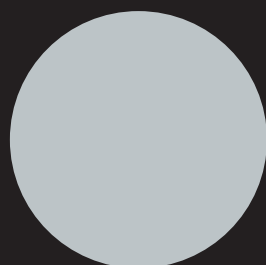
36 #1923



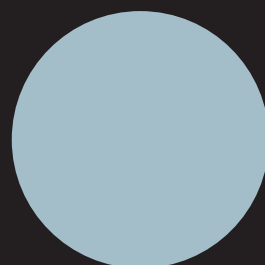
37 #1923



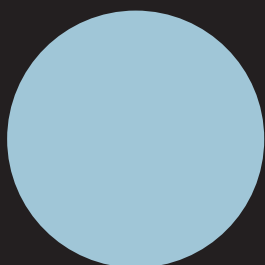
38 #1923



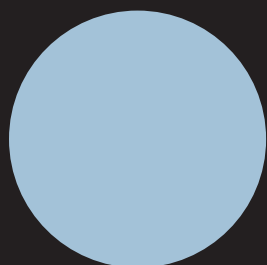
39 #1923



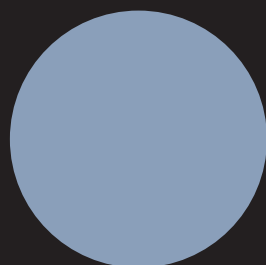
40 #1923



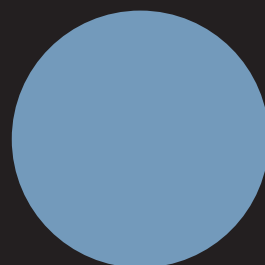
41 #1923



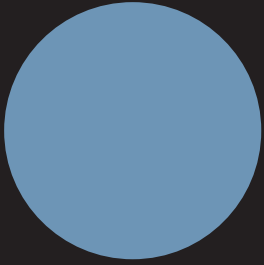
42 #1923



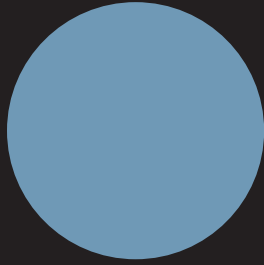
43 #1923



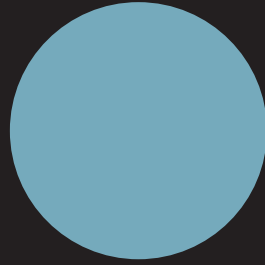
44 #1923



45 #1923



46 #1923



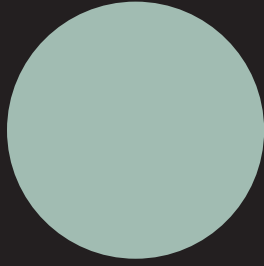
47 #1923



48 #1923



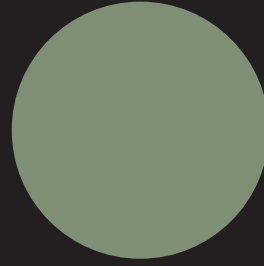
49 #1923



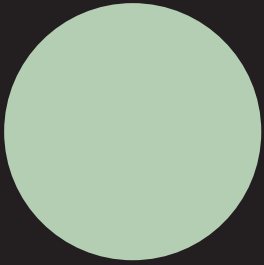
50 #1923



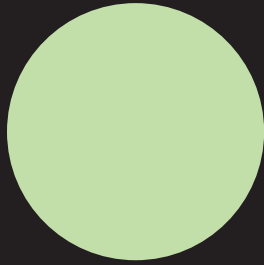
51 #1923



52 #1923



53 #1923



54 #1923



55 #1923



56 #1923



57 #1923



58 #1923



59 #1923



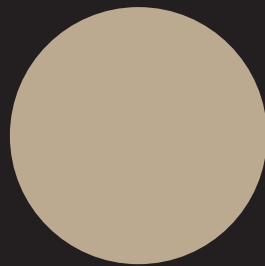
60 #1923



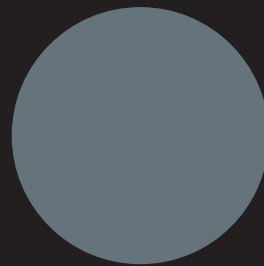
61 #1923



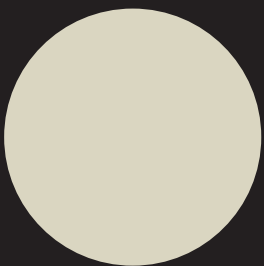
62 #1923



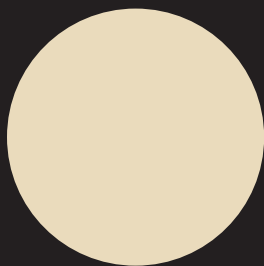
63 #1923



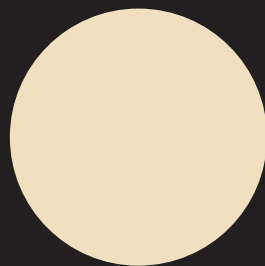
64 #1923



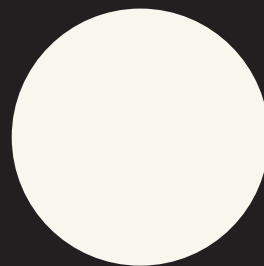
65 #1923



66 #1923



67 #1923



68 #1923

Umgeben von zeitlosen Farben

Mit granol® pittura #1923



Die **granol® pittura #1923-Farbenkollektion** steht für hochwertige, resolut-klingende Mineralfarbe zur Gestaltung von stilistisch zeitlosen und akzentuierten Oberflächen im Innen- und Aussenbereich.

Durch die mineralischen, antiseptischen und antibakteriellen Eigenschaften findet die Sol-Silikatfarbe eine vielverbreitete und dauerhafte Verwendung in allen Baukörpern.

granol®

Hält zusammen. Seit 1956.

Granol AG

Zeughausstrasse 5
6210 Sursee
+41 41 926 96 96
info@granol.ch
www.granol.ch

